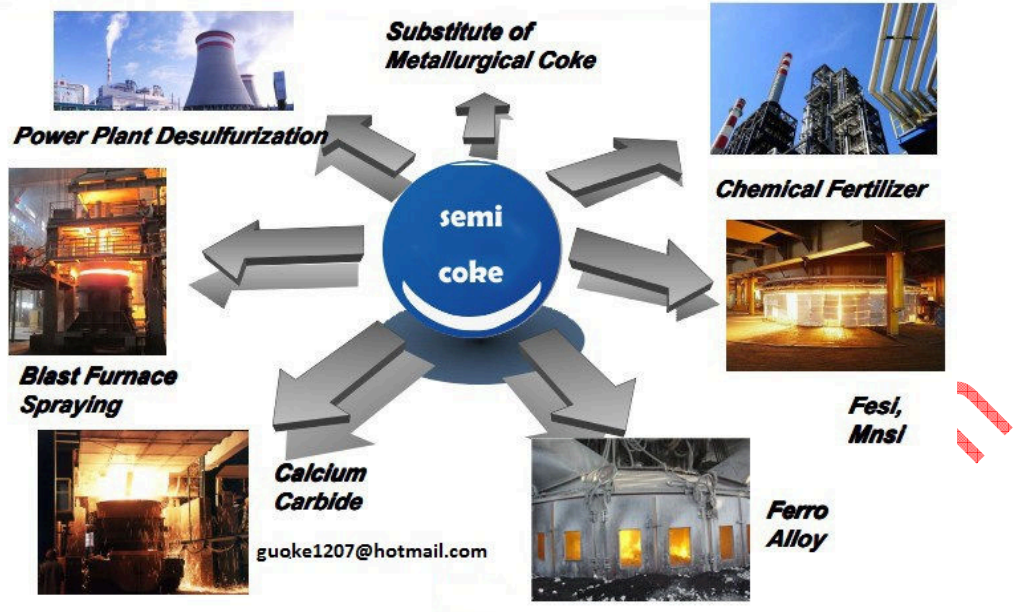

High Quality Semi Coke

High Quality Semi Coke is light black carbon material, characterized by low ash, low sulfur, low phosphorus, high fixed carbon, high specific resistance, high chemical activity. It is widely used in ferroalloys plant, calcium carbide plant, steel-making plant, especially producing ferrosilicon, ferronickel, Ferrochrome, silicon carbide and other ferroalloys.

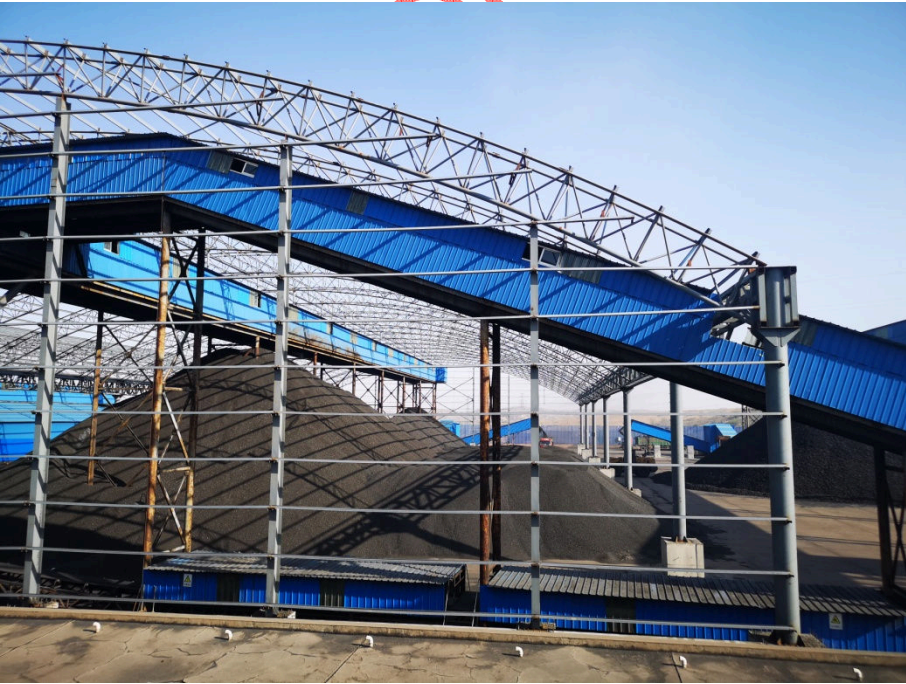
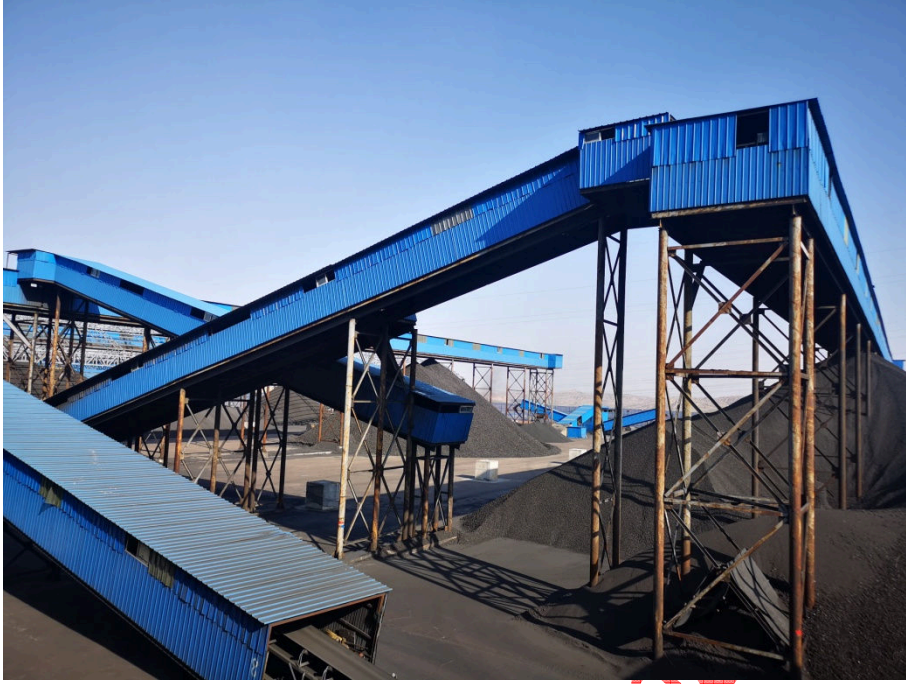
High Quality Semi Coke is more suitable than met coke in ferroalloys production as reductant: It reduce unit electricity consumption significantly (nearly it can help save more than 1000 KWH for per ton of ferroalloy production. Semi coke could take place of met coke, pet-coke, wood charcoal and other carbon materials without upgrading the equipment.

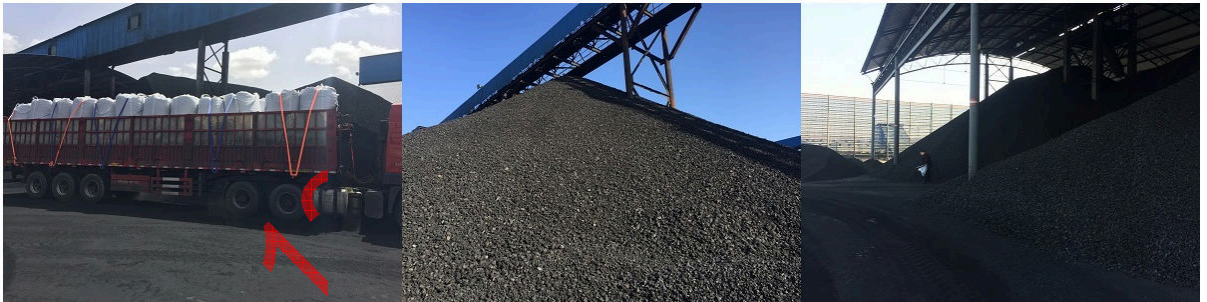
Specification:

Name	Index
Total Moisture	$\leq 15\%$
Fixed carbon	$\geq 84\%$
Ash	$\leq 9\%$
Volatile Matter	$\leq 7\%$
Total Sulphur	$\leq 0.4\%$
Phosphorus	$\leq 0.01\%$
Size	6-18,18-35mm









guoke

hotm

m



